

# SNYDER



**Equipment, Inc.**

*Storing, Rolling, Lifting since 1947*

**PRODUCT INFORMATION**

## **LYON SHOP DESKS**

2946 Larimer St. Denver, CO 80205

303-295-1100 / 800-373-7693

FAX 303-295-2464

Email [info@snyderequipment.com](mailto:info@snyderequipment.com)

[www.snyderequipment.com](http://www.snyderequipment.com)

# Rugged Steel Shop Desks and Cabinets

Heavy duty steel construction built for years of industrial service in plants, warehouses and other facilities. All shop desks and cabinets feature heavy gauge steel tops, sides and legs.



**COLOR INFORMATION, choose from the following**

**in stock**

**Dove Gray**  
Add Prefix **DD** to Cat. No.  
All steel components

**Wedgewood Blue**  
Add Prefix **BB** to Cat. No.  
All steel components

**in stock**

**Putty**  
Add Prefix **PP** to Cat. No.  
All steel components

**Ash**  
Add Prefix **AA** to Cat. No.  
All steel components



### Shop Desk

- Writing surface, storage space, and lockable compartment for receiving clerk, checkers, security personnel and others.
- Shelf at bottom is adjustable.
- Pencil and paper compartments.
- Sloping top is 43" h at front. Drawer is 24" w x 25" d x 3 1/2" h.

**No. 2250** – 34 1/2" w x 30" d x 53" h



### Mobile Shop Desk

- Has all the features of the Standing Desk at left, plus mobility.
- Useful for time-study personnel, inventory clerks and inspectors required to carry papers, books or records from job to job.
- Swivel casters are 2 1/2" in diameter. Front casters nearest to user have foot-controlled locking lever. Adds 3" to height.

**No. 2254** – 34 1/2" w x 30" d x 56" h

**No. 2256** – Extra set of casters (4)



### Cabinet Desk

- Same basic features as Standing Desk but with large bottom cabinet-type storage area that is fully lockable.
- Right hand cabinet door has chrome-plated handle with built-in three-point locking device.

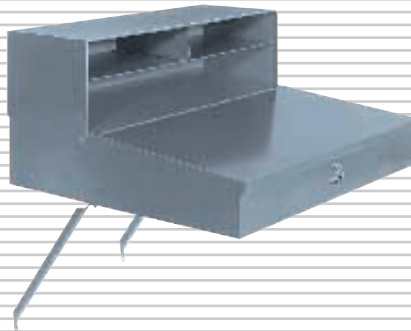
**No. 2251** – 34 1/2" w x 30" d x 53" h



### Hanging Cabinet

- If floor space is at a premium, hang this cabinet on the wall closest to the job – keeping tools or supplies within easy reach.
- Sides and back punched every inch for 2 1/2" pegs.
- Two-point latching device with padlock attachment (padlock not included).
- Includes shelf, socket tray and 18 pegs.

**No. 3020** – 24" w x 12" d x 35" h



### Wall Desk

- Attaches to any handy wall space, building column or shelving rack end.
- Sloping work surface is 24 5/8" w x 23" d x 12" h.
- Includes handy storage compartment under lift-top. Built-in lock for security.
- Two supporting braces are included.

**No. 2253** – 24 1/2" w x 23" d x 12" h, plus braces



### Tool Stand Cabinet

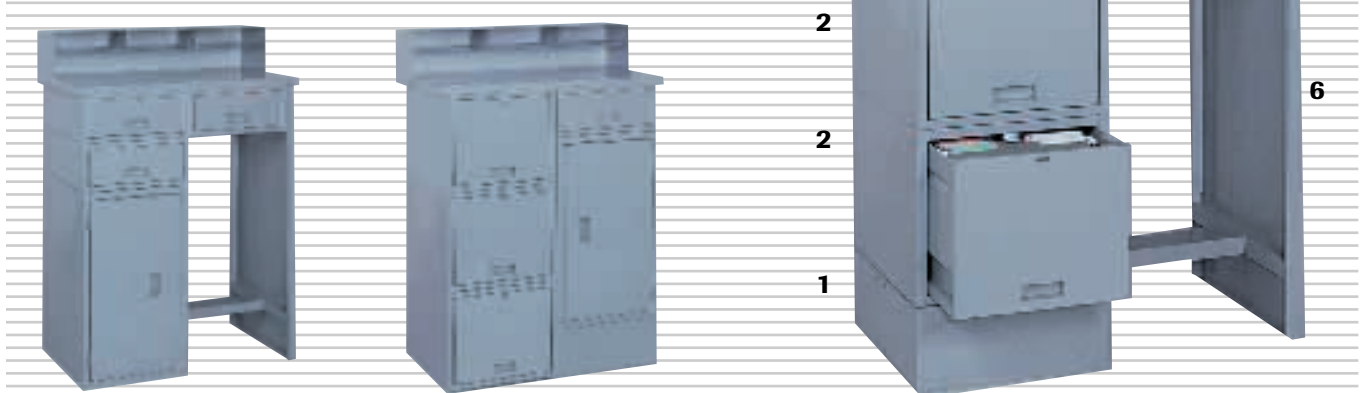
- Sturdy, small work surface and space to lock up blueprints, tools, precision instruments or other valuables.
- Three shelves adjust every 2".
- Built-in lock. Chrome-plated handle.
- Top reverses for flat working surface.

**No. 3010** – 21 1/4" w x 15 1/4" d x 33 3/8" h

**No. 3150** – Set of casters for 3010

# Pre-Engineered Modular Shop Desks

- Heavy-duty steel construction makes these stand-up desks ideal for service in plants, warehouses and on shipping/receiving docks.
- Tops and tough steel components provide years of maintenance-free use.
- Hasps on drawers accept padlocks (not included) to secure contents.
- Optional key-locks for cabinets offer added security.
- Four-compartment riser keeps supplies and paper-work organized within easy reach.
- Size overall 33"w x 20"d x 53"h, with desk top height of 47½".



## Three Drawer Cabinet/Desk

- Includes three low-profile drawers.
- Cabinet with adjustable shelf and end support assembly.

**No. 2259**

## Four Drawer Cabinet/Desk

- Includes one low-profile drawer.
- Three double height drawers.
- Cabinet with adjustable shelf and base.

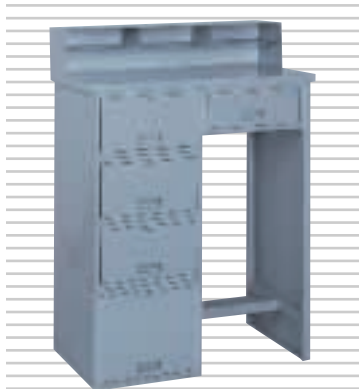
**No. 2257**

## Four Drawer Desk

- Includes two low-profile drawers.
- Two double height drawers.
- Base and end support assembly.

**No. 2255**

**Shown with optional telephone tray.**



## Five Drawer Desk

- Includes one low-profile drawer.
- Three perfect-fit drawers.
- One double height drawer.
- End support assembly.

**No. 2258**

**2202** End Support (6)

**2794\*** 3 Perfect Fit Drawers (4)

**2991** Cabinet (4)

**2206** Top & Riser (0)

**2788** Low Profile Drawer (1)

**2203** Base (1)

**2790** Double High Drawer (2)

**2204** Phone Tray for Riser (0)

**Each component has numerical "stacking value" which must add up to six on each side of the desk to support the top and stand assembly.**

**COLOR INFORMATION, choose from the following**

<b>in stock</b>	<b>Dove Gray</b> Add Prefix <b>DD</b> to Cat. No. All steel components	<b>Wedgewood Blue</b> Add Prefix <b>BB</b> to Cat. No. All steel components
	<b>Putty</b> Add Prefix <b>PP</b> to Cat. No. All steel components	<b>Ash</b> Add Prefix <b>AA</b> to Cat. No. All steel components

Description	Cat. No.	Dimensions	Stacking Value
End Support	2202	20"d x 40½"h	6
Base	2203	20"d x 6½"h	1
Phone Tray for Riser	2204	n/a	0
Top & Riser	2206	31¾"w x 20"d x 7"h	0
Low Profile Drawer	2788	15¾"w x 20"d x 6¾"h	1
Double High Drawer	2790	15¾"w x 20"d x 13½"h	2
Cabinet	2991	15¾"w x 20"d x 27"h	4
Perfect Fit Drawers*	2794	15¾"w 20"d x 27"h	4
Grooved Keylock for Cabinets	7037	n/a	0

\*Must be ordered in groups of three, stacked for shop desk configuration.