



SNYDER



Equipment, Inc.

Storing, Rolling, Lifting since 1947

PRODUCT INFORMATION

LYON BULK STORAGE RACK

2946 Larimer St. Denver, CO 80205

303-295-1100 / 800-373-7693

FAX 303-295-2464

Email info@snyderequipment.com

www.snyderequipment.com

Pre-Engineered Bulk Storage Rack ...

Designed for the hand-loading of intermediate weight bulky items, this versatile rack system can be used in hundreds of storage applications. In addition to storing cartoned merchandise in shipping and receiving departments, it can be used for display racking in furniture and department stores, for storage of medical and dietary supplies in hospitals and more. And, Lyon bulk storage rack integrates with Lyon 8000 Series shelving for a complete storage system. Heavy-duty 14-gauge steel beams included.

For specifications on individual components, see pages 176-177.



In the interest of safety, Lyon recommends floor anchoring racks that are 72" or higher. See page 177.



Starter with No Decking
Front-To-Back supports per level: 60"w-1, 72", 84", 96"w-2

Starter with Solid Decking
Front-To-Back supports per level: 60"w-1, 72", 84", 96"w-2

Starter with Ribbed Decking
Front-To-Back supports per level: 60"w-1, 72", 84", 96"w-2

				60" Wide Racks					72" Wide Racks				
Levels	Height	Depth	Type	No Deck	Solid	Ribbed	Wire	Particle	No Deck	Solid	Ribbed	Wire	Particle
3	60"	24"	Starter	67201S	N/A	67201SR	67201SW	67201SP	67301S	67301SD	67301SR	67301SW	67301SP
			Add-on	67201	N/A	67201R	67201W	67201P	67301	67301D	67301R	67301W	67301P
		30"	Starter	67202S	67202SD	67202SR	67202SW	N/A	67302S	N/A	67302SR	67302SW	N/A
			Add-on	67202	67202D	67202R	67202W	N/A	67302	N/A	67302R	67302W	N/A
		36"	Starter	67203S	67203SD	67203SR	67203SW	67203SP	67303S	67303SD	67303SR	67303SW	67303SP
			Add-on	67203	67203D	67203R	67203W	67203P	67303	67303D	67303R	67303W	67303P
		48"	Starter	67205S	67205SD	67205SR	67205SW	67205SP	67305S	67305SD	67305SR	67305SW	67305SP
			Add-on	67205	67205D	67205R	67205W	67205P	67305	67305D	67305R	67305W	67305P
3	72"	24"	Starter	67211S	N/A	67211SR	67211SW	67211SP	67311S	67311SD	67311SR	67311SW	67311SP
			Add-on	67211	N/A	67211R	67211W	67211P	67311	67311D	67311R	67311W	67311P
		30"	Starter	67212S	67212SD	67212SR	67212SW	N/A	67312S	N/A	67312SR	67312SW	N/A
			Add-on	67212	67212D	67212R	67212W	N/A	67312	N/A	67312R	67312W	N/A
		36"	Starter	67213S	67213SD	67213SR	67213SW	67213SP	67313S	67313SD	67313SR	67313SW	67313SP
			Add-on	67213	67213D	67213R	67213W	67213P	67313	67313D	67313R	67313W	67313P
		48"	Starter	67215S	67215SD	67215SR	67215SW	67215SP	67315S	67315SD	67315SR	67315SW	67315SP
			Add-on	67215	67215D	67215R	67215W	67215P	67315	67315D	67315R	67315W	67315P
3	84"	24"	Starter	67221S	N/A	67221SR	67221SW	67221SP	67321S	67321SD	67321SR	67321SW	67321SP
			Add-on	67221	N/A	67221R	67221W	67221P	67321	67321D	67321R	67321W	67321P
		30"	Starter	67222S	67222SD	67222SR	67222SW	N/A	67322S	N/A	67322SR	67322SW	N/A
			Add-on	67222	67222D	67222R	67222W	N/A	67322	N/A	67322R	67322W	N/A
		36"	Starter	67223S	67223SD	67223SR	67223SW	67223SP	67323S	67323SD	67323SR	67323SW	67323SP
			Add-on	67223	67223D	67223R	67223W	67223P	67323	67323D	67323R	67323W	67323P
		48"	Starter	67225S	67225SD	67225SR	67225SW	67225SP	67325S	67325SD	67325SR	67325SW	67325SP
			Add-on	67225	67225D	67225R	67225W	67225P	67325	67325D	67325R	67325W	67325P
4	96"	24"	Starter	67231S	N/A	67231SR	67231SW	67231SP	67331S	67331SD	67331SR	67331SW	67331SP
			Add-on	67231	N/A	67231R	67231W	67231P	67331	67331D	67331R	67331W	67331P
		30"	Starter	67232S	67232SD	67232SR	67232SW	N/A	67332S	N/A	67332SR	67332SW	N/A
			Add-on	67232	67232D	67232R	67232W	N/A	67332	N/A	67332R	67332W	N/A
		36"	Starter	67233S	67233SD	67233SR	67233SW	67233SP	67333S	67333SD	67333SR	67333SW	67333SP
			Add-on	67233	67233D	67233R	67233W	67233P	67333	67333D	67333R	67333W	67333P
		48"	Starter	67235S	67235SD	67235SR	67235SW	67235SP	67335S	67335SD	67335SR	67335SW	67335SP
			Add-on	67235	67235D	67235R	67235W	67235P	67335	67335D	67335R	67335W	67335P

For Hundreds of Storage Applications!



Lyon Bulk Storage Rack integrates easily with 8000 Series shelving. See page 136 for information.

Related Products

- Bulk Storage Rack Components, pages 176-177
- Pallet Rack, pages 178-181.
- Rivet Rack, pages 170-173.

COLOR INFORMATION, choose from the following

- in stock** Dove Gray
Add Prefix **DD**
to Cat. No.
- Putty**
Add Prefix **PP**
to Cat. No.
- Wedgewood Blue**
Add Prefix **BB**
to Cat. No.
- Ash**
Add Prefix **AA**
to Cat. No.

Storage Rack



Starter with Wire Decking
Front-To-Back supports per level:
60"w-1, 72", 84", 96"w-2



Starter with Particle Board
Front-To-Back supports per level:
60"w-2, 72"w-3, 96"w-4

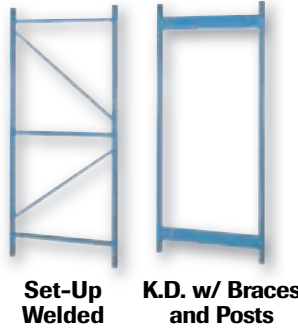


Levels	Height	Depth	Type	84" Wide Racks					96" Wide Racks				
				No Deck	Solid	Ribbed	Wire	Particle	No Deck	Solid	Ribbed	Wire	Particle
3	60"	24"	Starter Add-on	67401S 67401	67401SD 67401D	67401SR 67401R	67401SW 67401W	N/A N/A	67501S 67501	67501SD 67501D	67501SR 67501R	67501SW 67501W	67501SP 67501P
		30"	Starter Add-on	67402S 67402	N/A N/A	67402SR 67402R	67402SW 67402W	N/A N/A	67502S 67502	N/A N/A	67502SR 67502R	67502SW 67502W	N/A N/A
		36"	Starter Add-on	67403S 67403	67403SD 67403D	67403SR 67403R	67403SW 67403W	N/A N/A	67503S 67503	67503SD 67503D	67503SR 67503R	67503SW 67503W	67503SP 67503P
		48"	Starter Add-on	67405S 67405	67405SD 67405D	67405SR 67405R	67405SW 67405W	N/A N/A	67505S 67505	67505SD 67505D	67505SR 67505R	67505SW 67505W	67505SP 67505P
3	72"	24"	Starter Add-on	67411S 67411	67411SD 67411D	67411SR 67411R	67411SW 67411W	N/A N/A	67511S 67511	67511SD 67511D	67511SR 67511R	67511SW 67511W	67511SP 67511P
		30"	Starter Add-on	67412S 67412	N/A N/A	67412SR 67412R	67412SW 67412W	N/A N/A	67512S 67512	N/A N/A	67512SR 67512R	67512SW 67512W	N/A N/A
		36"	Starter Add-on	67413S 67413	67413SD 67413D	67413SR 67413R	67413SW 67413W	N/A N/A	67513S 67513	67513SD 67513D	67513SR 67513R	67513SW 67513W	67513SP 67513P
		48"	Starter Add-on	67415S 67415	67415SD 67415D	67415SR 67415R	67415SW 67415W	N/A N/A	67515S 67515	67515SD 67515D	67515SR 67515R	67515SW 67515W	67515SP 67515P
3	84"	24"	Starter Add-on	67421S 67421	67421SD 67421D	67421SR 67421R	67421SW 67421W	N/A N/A	67521S 67521	67521SD 67521D	67521SR 67521R	67521SW 67521W	67521SP 67521P
		30"	Starter Add-on	67422S 67422	N/A N/A	67422SR 67422R	67422SW 67422W	N/A N/A	67522S 67522	N/A N/A	67522SR 67522R	67522SW 67522W	N/A N/A
		36"	Starter Add-on	67423S 67423	67423SD 67423D	67423SR 67423R	67423SW 67423W	N/A N/A	67523S 67523	67523SD 67523D	67523SR 67523R	67523SW 67523W	67523SP 67523P
		48"	Starter Add-on	67425S 67425	67425SD 67425D	67425SR 67425R	67425SW 67425W	N/A N/A	67525S 67525	67525SD 67525D	67525SR 67525R	67525SW 67525W	67525SP 67525P
4	96"	24"	Starter Add-on	67431S 67431	67431SD 67431D	67431SR 67431R	67431SW 67431W	N/A N/A	67531S 67531	67531SD 67531D	67531SR 67531R	67531SW 67531W	67531SP 67531P
		30"	Starter Add-on	67432S 67432	N/A N/A	67432SR 67432R	67432SW 67432W	N/A N/A	67532S 67532	N/A N/A	67532SR 67532R	67532SW 67532W	N/A N/A
		36"	Starter Add-on	67433S 67433	67433SD 67433D	67433SR 67433R	67433SW 67433W	N/A N/A	67533S 67533	67533SD 67533D	67533SR 67533R	67533SW 67533W	67533SP 67533P
		48"	Starter Add-on	67435S 67435	67435SD 67435D	67435SR 67435R	67435SW 67435W	N/A N/A	67535S 67535	67535SD 67535D	67535SR 67535R	67535SW 67535W	67535SP 67535P

Bulk Storage Rack Uprights and Beams

Upright Assemblies

- Choose fully welded set-up or K.D. upright.
- Welded upright has tubular bracing, mig-welded to post for durability and quick installation.
 - Upright: 1 3/4" x 1 1/8", 14-gauge.
 - Adjustment: 1/2" centers.



COLOR INFORMATION, choose from the following

- in stock** Dove Gray Add Prefix DD to Cat. No.
- Putty** Add Prefix PP to Cat. No.
- Wedgewood Blue** Add Prefix BB to Cat. No.
- Ash** Add Prefix AA to Cat. No.

K.D. Upright Posts - 10,000 lb. cap. per pair.

K.D. Ladder Braces - Use as replacement, or as a component.

Height	Cat. No.
60"	63602
72"	63603
84"	63604
96"	63605
120"	63607
144"	63609

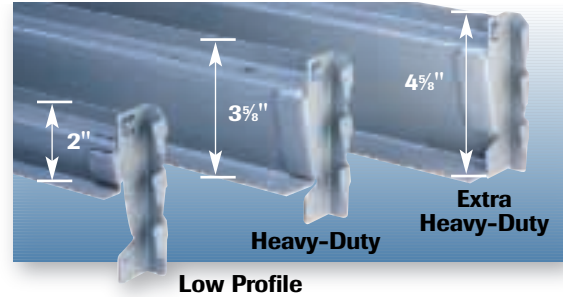
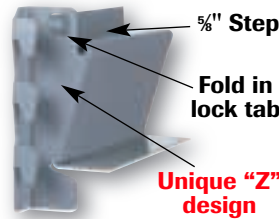
Depth	Cat. No.
15"	63515
18"	63518
24"	63524
30"	63530
36"	63536
42"	63542
48"	63548

Depth	60" High		72" High		84" High		96" High		120" High		144" High	
	Set-Up	K.D.*	Set-Up	K.D.*	Set-Up	K.D.*	Set-Up	K.D.*	Set-Up	K.D.*	Set-Up	K.D.*
15"	N/A	63152	N/A	63153	N/A	63154	N/A	63155	N/A	63157	N/A	63159
18"	N/A	63182	N/A	63183	N/A	63184	N/A	63185	N/A	63187	N/A	63189
24"	64242	63242	64243	63243	64244	63244	64245	63245	64247	63247	64249	63249
30"	64302	63302	64303	63303	64304	63304	64305	63305	64307	63307	64309	63309
36"	64362	63362	64363	63363	64364	63364	64365	63365	64367	63367	64369	63369
42"	64422	63422	64423	63423	64424	63424	64425	63425	64427	63427	64429	63429
48"	64482	63482	64483	63483	64484	63484	64485	63485	64487	63487	64489	63489

*NOTE: K.D. Upright includes two posts and two or more bolt on ladder braces.

Heavy and Extra Heavy-Duty "Z" Beams

Unique "Z" beam design increases strength and load capacity, resists tipping and eliminates wasted space, front-to-back. Beam clips are mig-welded for added strength. Fold in lock tab easily engages for security against displacement.



Low-Profile Beams

Low-profile beams offer light weight, high-density alternative for commercial applications. Narrow height design increases vertical storage capacity.

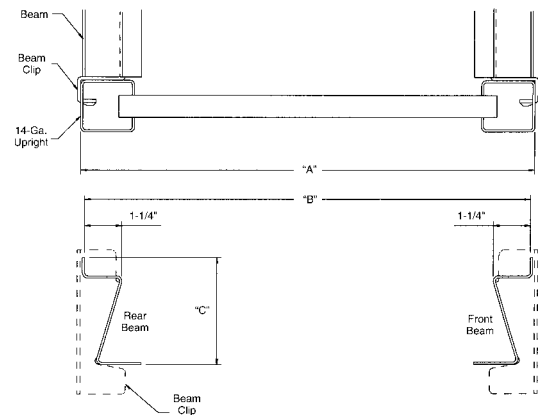
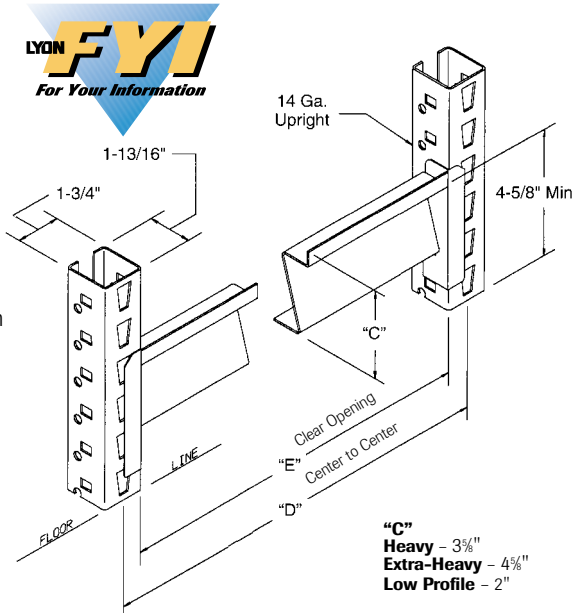
Capacities shown are maximum safe evenly distributed static loads per pair of beams with front-to-back support. Upright capacities are based on beam centers no greater than 36".

Nominal	Actual	"D"	"E"	Heavy-Duty Beam		Extra-Heavy Duty Beam		Low Profile Beam	
Width	Width			Cat. No.	Cap.	Cat. No.	Cap.	Cat. No.	Cap.
48"	48 1/2"	50 15/32"	48 23/32"	62148	3,300	N/A	N/A	62048	665
60"	60 1/2"	62 15/32"	60 23/32"	62160	2,600	N/A	N/A	62060	530
72"	72 1/2"	74 15/32"	72 23/32"	62172	1,900	62272	3,300	62072	440
84"	84 1/2"	86 15/32"	84 23/32"	62184	1,775	N/A	N/A	62084	380
96"	96 1/2"	98 15/32"	96 23/32"	62196	1,650	62296	3,300	62096	330

Dimensions For Bulk Storage Racks

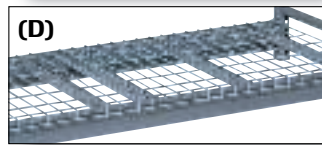
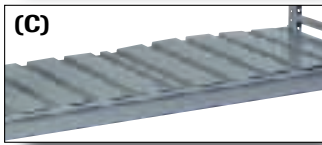


When figuring floor space for Lyon bulk storage racks, first add 4 7/32" to nominal beam length for width of single section, then add 2 15/32" to nominal beam length for each additional section. Then, add 3/16" to nominal depth of upright assembly. Also, Racks must be level and plumb and installed per assembly instruction #10206-AA.



Nom. Rack Depth	Rack Depth "A"	Inside Depth "B"
15"	15 5/8"	15 1/4"
18"	18 5/8"	18 1/4"
24"	24 5/8"	24 1/4"
30"	30 5/8"	30 1/4"
36"	36 5/8"	36 1/4"
42"	42 5/8"	42 1/4"
48"	48 5/8"	48 1/4"

Bulk Storage Rack Decking and Beams



Capacities are based on evenly distributed static load, with beams joined by correct number of front-to-back supports and no allowance for shock or uneven loading. Load is limited to support capacity of beams and upright assemblies.

(C) Ribbed Decking Panels				(D) Wire Decking Panels	
Width	Depth	Cat. No.	Capacity	Cat. No.	Capacity
24"	24"	65224	1,400	65454	750
24"	30"	65230	1,200	65456	750
24"	36"	65236	1,000	65458	1,000
24"	42"	65242	800	65460	1,000
24"	48"	65248	600	65462	1,000
36"	24"	65324	1,800	65472	750
36"	30"	65330	1,600	65474	750
36"	36"	65336	1,400	65476	1,000
36"	42"	65342	1,100	65487	1,000
36"	48"	65348	900	65480	1,000

(A) Solid Decking

Features Lyon Heavy Duty Industrial Shelves for a smooth uninterrupted decking surface. See page 156 for selections.

(B) Particle Board Decking

Durable, 5/8" thick particle board decking. Selections on page 172.

(C) Ribbed Decking

Versatile 20-gauge ribbed decking. Ribs allow for space to grab packages easily and prevent pinched fingers.

(D) Wire Decking

This heavy-duty waterfall decking features 4" x 2" wire mesh with heavy gauge channels for added strength. This deck is the best choice when air circulation and light penetration are required. Also allows water to flow in the event a sprinkler system is activated.

Wire Decking Available In

Frost Gray
Add Prefix **FF** to Cat. No.

Beam Width

48"	2 - 24" wide
60"	1 - 24" wide + 1 - 36" wide
72"	2 - 36" Wide
84"	2 - 24" wide + 1 - 36" wide
96"	1 - 24" wide + 2 - 36" wide

Quantity of Ribbed/Wire Panels Required

COLOR INFORMATION, choose from the following



Dove Gray
Add Prefix **DD** to Cat. No.



Wedgewood Blue
Add Prefix **BB** to Cat. No.



Putty
Add Prefix **PP** to Cat. No.



Ash
Add Prefix **AA** to Cat. No.

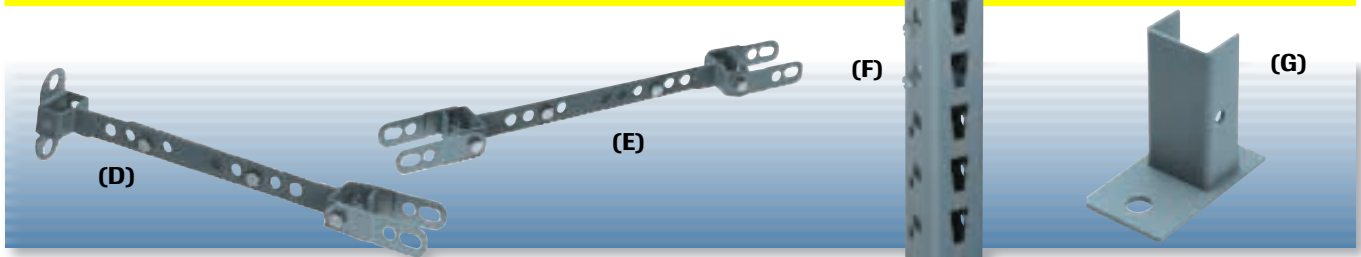
Front-To-Back Supports

Used to minimize beam rotation under heavy loads. Also serves as a plywood support. No hardware or tools needed.

Rack Depth	Front-to-Back Supports Cat. No.
15"	65815
18"	65818
24"	65824
30"	65830
36"	65836
42"	65842
48"	65848

Minimum required when used with:

Beam Width	Plywood/ Particle Board	Solid/Ribbed Panels or Storage on Beams
48"	2	1
60"	2	1
72"	3	2
84"	3	2
96"	4	2



(D) Back-To-Wall Support

Bolts to upright member and wall to maintain shelving stability. Extension dimensions: 12" x 17 1/4".

No. 65145

(E) Back-To-Back Support

ties bulk storage rack back to back, maintains stability and spacing without interfering with storage space. Extension dimensions: 12" x 17 1/4"

No. 65140

(F) Mezzanine Splice Channels

For two-level Bulk Storage Rack applications, simply insert reinforcing splice channels into bottom upright assembly posts and fit second-level upright assembly posts over channel extensions. The galvanized splice channels provide rigidity at the splice.

No. 65120

(G) Anchoring Foot

To anchor upright assembly to floor. Dove Gray only.

No. 65130

Mezzanine Floor Support Bracket (not pictured)

Necessary to support mezzanine flooring. One required per upright assembly. Set of right and left needed for cross-aisle installation.

No. 65150 - Right hand (included mezzanine splice channel)

No. 65151 - Left hand (included mezzanine splice channel)