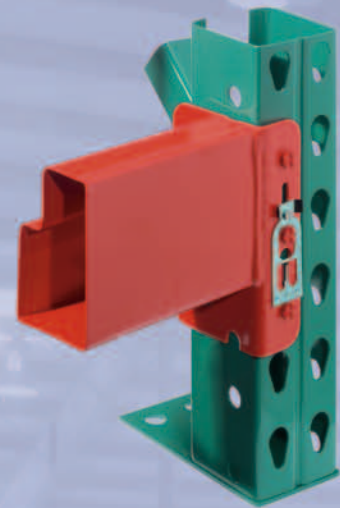


BEAM SELECTION

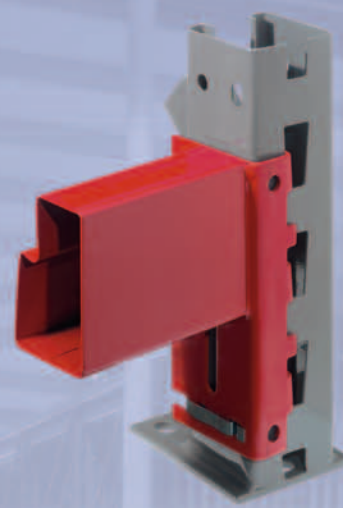


M-I RAK



TEARDROP CONNECTOR - 2" ADJUSTABILITY

6" long 3/3 rivets for: 2504, 3506, 4256, 4876
8" long w/4 rivets for: 5506, 6006, 6004, 6003

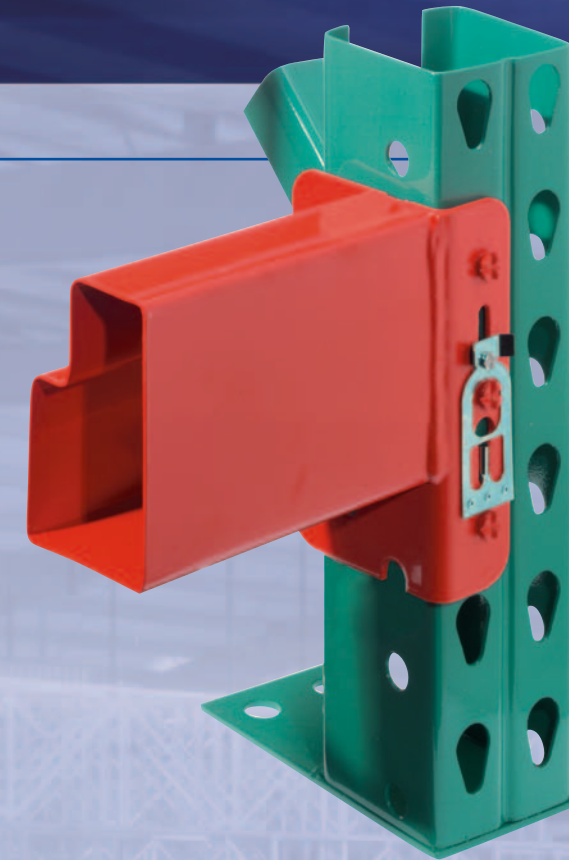


KEYSTONE CONNECTOR - 3" ADJUSTABILITY

8 3/8" long w/3 hooks for: 2504, 3506, 4256, 4876, 5506, 6006, 6004, 6003

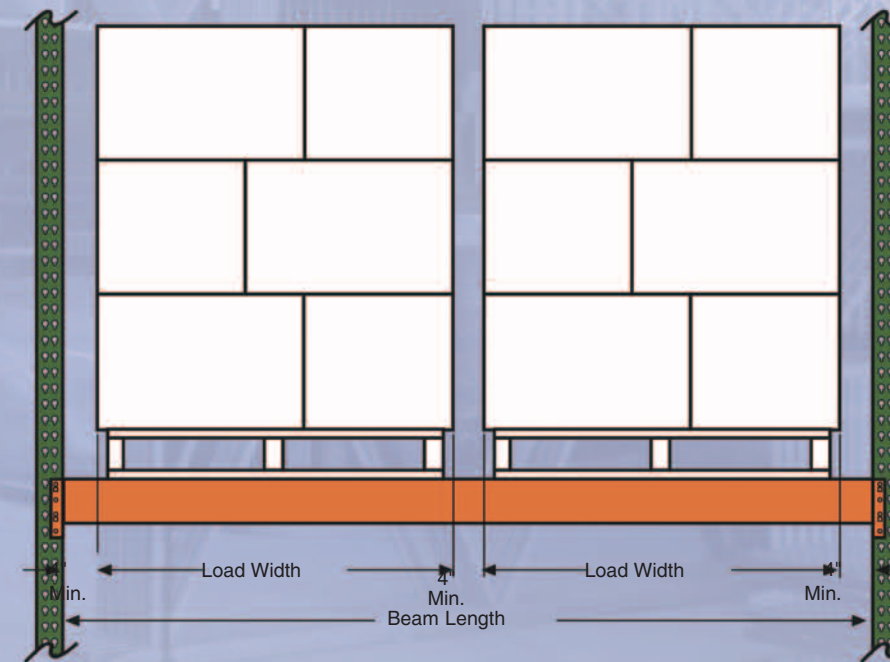
ROLL-FORM BEAMS

- Each beam is a cold roll-formed single piece of High Strength steel with a continuous seam weld.
- Kingway Inca • Clymer's new advanced, spring steel positive locking device prevents accidental dislodging of beam, yet allows for easy adjustments. (it can be easily replaced if damaged).
- Kingway Inca • Clymer's beam safety factor of 1.65 to 1 conforms with current Rack Manufacturers' Institute standards. (R.M.I. - 2002)



LENGTH	B2504*	B3506	B4256	B4876	B5506	B6006	B6004	B6003
48"	6,040 lb.	7,820 lb.	10,260 lb.	12,430 lb.	14,930 lb.	16,450 lb.	16,576 lb.	16,576 lb.
60"	5,020 lb.	6,440 lb.	8,390 lb.	10,110 lb.	12,110 lb.	13,320 lb.	15,990 lb.	16,576 lb.
72"	3,820 lb.	5,510 lb.	7,140 lb.	8,560 lb.	10,230 lb.	11,230 lb.	13,460 lb.	16,490 lb.
84"	2,930 lb.	4,840 lb.	6,240 lb.	7,450 lb.	8,890 lb.	9,740 lb.	11,650 lb.	14,260 lb.
90"	2,600 lb.	4,360 lb.	5,880 lb.	7,010 lb.	8,350 lb.	9,140 lb.	10,930 lb.	13,360 lb.
96"	2,330 lb.	3,890 lb.	5,570 lb.	6,620 lb.	7,880 lb.	8,620 lb.	10,300 lb.	12,588 lb.
102"	2,100 lb.	3,500 lb.	5,280 lb.	6,260 lb.	7,450 lb.	8,140 lb.	9,550 lb.	11,320 lb.
108"	1,900 lb.	3,160 lb.	4,750 lb.	5,620 lb.	6,690 lb.	7,300 lb.	8,560 lb.	10,140 lb.
114"	1,740 lb.	2,880 lb.	4,300 lb.	5,080 lb.	6,040 lb.	6,590 lb.	7,720 lb.	9,140 lb.
120"	1,590 lb.	2,630 lb.	3,910 lb.	4,620 lb.	5,480 lb.	5,980 lb.	7,000 lb.	8,280 lb.
126"	1,470 lb.	2,420 lb.	3,580 lb.	4,220 lb.	5,000 lb.	5,450 lb.	6,380 lb.	7,540 lb.
132"	1,360 lb.	2,230 lb.	3,290 lb.	3,870 lb.	4,590 lb.	4,990 lb.	5,840 lb.	6,900 lb.
138"	1,260 lb.	2,070 lb.	3,030 lb.	3,560 lb.	4,220 lb.	4,590 lb.	5,370 lb.	6,330 lb.
144"	1,180 lb.	1,920 lb.	2,810 lb.	3,290 lb.	3,900 lb.	4,240 lb.	4,950 lb.	5,840 lb.
150"	1,100 lb.	1,790 lb.	2,610 lb.	3,060 lb.	3,610 lb.	3,930 lb.	4,580 lb.	5,400 lb.
156"	1,030 lb.	1,680 lb.	2,430 lb.	2,840 lb.	3,360 lb.	3,650 lb.	4,260 lb.	5,010 lb.

*2504 less than 84 inches requires full beam weld to match capacities.
Teardrop Beam T3B • M-I RAK M1B • Keystone Beam K3B
Quick-Ship Available. Consult Factory. Teardrop, Keystone.



Capacities are based on evenly distributed loads and a 25% pallet impact load.

- Consult factory for special requirements and additional lengths or capacities.
- It is recommended that beams greater than 108" utilize on front-to-back beam tie.
- RMI specifications limit beam deflection to no more than beam length divided by 180 (L/180).

Notes: Capacities for beams 48 to 84 inches are based on one pallet loading; for beams 90 to 120 inches long, on two pallet loading; for beams 126 inches and greater, on three pallet loading.

Capacities are based on no lateral ties. In some instances, shelf capacities may increase by adding a lateral brace (tie) between pairs of beams.

Beam Deflection is limited to L/180.

Capacities are based on the 1997 RMI and the 1996 AISA specifications using the LRFD method.

Capacities are based on uniformly-distributed loads with a 25% pallet-load impact factor included. For special loading situations, contact your factory representative.