



Equipment, Inc.

Storing, Rolling, Lifting since 1947

PRODUCT INFORMATION

GRABER BIKE BANK RACKS

2946 Larimer St. Denver, CO 80205
303-295-1100 / 800-373-7693
FAX 303-295-2464
Email info@snyderequipment.com
www.snyderequipment.com

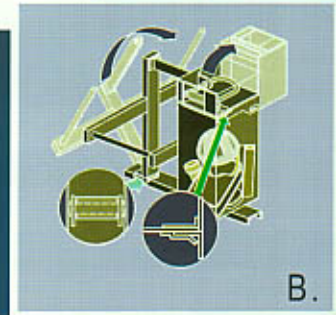
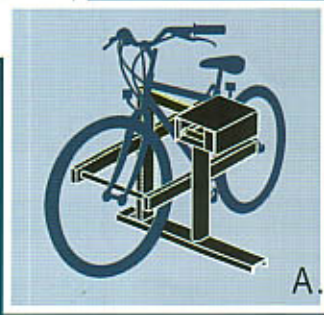
The BIKE BANK



Bike Bank®



Bike Bank® Plus



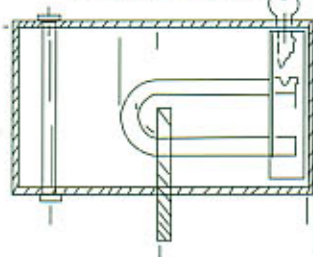
Bikes today can run anywhere from \$300 to \$5000. With the inflation of bike costs comes increased risk of bicycle theft. The Bike Bank has been specifically engineered to combat this risk, and has become the solution to many people's security problems. Graber has not received one report, since the Bike Bank's introduction, of a bike being stolen.

In the interest of longevity for the bike and the rack, the Bike Bank Plus is maintenance free, weather resistant powder coated, and gentle to bicycle frames.

The following features make this unit very appealing for long term bicycle parking.

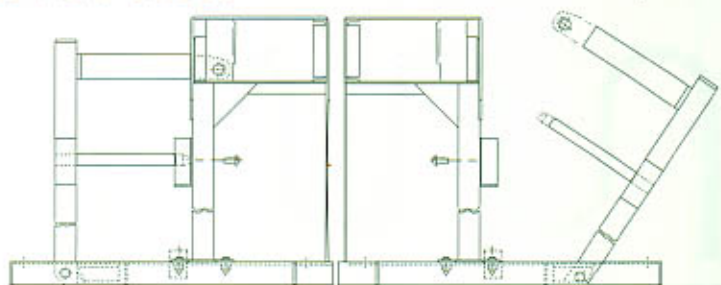
- ◆ A three point locking system locks the bicycle frame, both wheels, lock shelter and storage bank as one.
- ◆ Accommodates either padlocks or U locks in a tamper proof steel locking shelter.
- ◆ The rolled steel storage bank is large enough to hold a bike helmet, rain gear, back pack and detachable bike accessories.
- ◆ A durable, maintenance free, weather resistant coating covers all areas of the unit that come in contact with the bicycle preventing scratching or marring of the bicycle's finish.

Top view, lock shelter with U-lock



Side view closed

Side view open





8001 & 8002 - Bike Bank Plus

- ◆ Arms: rectangular 14 gauge steel tubing; 1 1/2" x 3"
- ◆ Locking Arm: case hardened steel; 1/4" x 1 1/2" x 10 3/4"
- ◆ Lock Shelter: 14 gauge steel; 9" x 12"
- ◆ Locking Pins: case hardened steel; 5/8" diameter x 8"
- ◆ Bolts to surface with special anchor expansion mounting bolts 1/2" x 6 1/2"
- ◆ Storage Bank: 14 gauge steel; 9" x 12" x 21"

8003 & 8004 - Bike Bank

- ◆ Bolts to surface with special anchor expansion mounting bolts 1/2" x 6 1/2"
- ◆ Arms: rectangular 14 gauge steel tubing; 1 1/2" x 3"
- ◆ Locking Arm: case hardened steel; 1/4" x 1 1/2" x 10 3/4"

Specifications 8000 Series

Model	Bikes	Type of mount	weight	length	width	height	Space Requirement
8001	2	double w/storage	143 lbs.	26.9"	54"	32.5"	81" x 66"
8002	1	single w/storage	71 lbs.	26.9"	23"	32.5"	34.5" x 66"
8003	2	double	112 lbs.	26.9"	54"	32.5"	81" x 66"
8004	1	single	55 lbs.	26.9"	23"	32.5"	34.5" x 66"

U.S. Patent 5,323,915