



# SNYDER



**Equipment, Inc.**

*Storing, Rolling, Lifting since 1947*

## PRODUCT INFORMATION

# Buckhorn straight wall containers

2946 Larimer St. Denver, CO 80205  
303-295-1100 / 800-373-7693  
FAX 303-295-2464  
Email [info@snyderequipment.com](mailto:info@snyderequipment.com)  
[www.snyderequipment.com](http://www.snyderequipment.com)

# Hand-Held Containers

**Straight Wall Container System**



page 30-34

**Modular Nesting Container Systems**



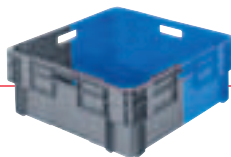
page 35-37

**Stack & Nest Totes**



page 38-39

**Bi-Color Stack & Nest Totes**



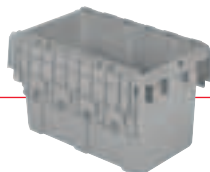
page 40-41

**Heavy-Duty Boxes, Totes & Trays**



page 42-45

**Attached Lid Containers**



page 46-53

**Detached Lid Containers**



page 54-55

**Buckhorn** is the complete source for an extensive variety of reusable, hand-held containers—from tough, heavy-duty performers to the most versatile all-purpose designs. Manufactured by injection or structural foam molding, these versatile totes are easy to handle, strong, efficient, and recyclable.

**S** = In Stock Items

Items identified by this symbol **S** are available for quick shipment in the color specified. Most products are available in the colors listed on page 93 with a minimum order quantity. Lead times may vary, please call Customer Service at 800-543-4454 for details.

# Straight Wall Container System



**Buckhorn's** reusable Straight Wall Container System delivers total cost savings and efficiency throughout the supplier-to-manufacturer material handling process.

Our stack-only modular containers are ideal for closed loop shipping, in-process handling, and storage applications where the same containers are used throughout. Containers cube 48" x 45" and 48" x 40" pallets.

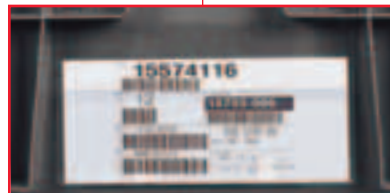
- Reinforced sides and bottoms enhance product protection
- Straight interior walls ensure an easy fit for protective dunnage
- Ergonomic design for manual lifting and loading safety and efficiency
- Interworking sizes allow mixed stacking on pallet
- Perimeter dust skirt on select sizes for added product protection
- Cross cube models allow easier interworking of different footprints
- Compatibility with other brands to expand your existing system
- Injection molded HDPE construction for impact, moisture and chemical resistance
- Options: Lids, ID systems, dunnage, drain holes and cross-stacking bottoms

## Available Colors

- Standard: Dark Gray, Green and Dark Blue on selected models. See specifications chart for details.
- Custom: Available in quantity orders

**[S]** = In Stock Items

Items identified by this symbol **[S]** are available for quick shipment in the color specified. Most products are available in the colors listed on page 93 with a minimum order quantity. Lead times may vary, please call Customer Service at **800-543-4454** for details.



## Identification Systems

Identification of contents is easy with optional cardholders and label placards. Hot stamping is also available

## System Terms

**Injection Molded:** Process that produces a solid, lightweight product with impact resistance.

**Structural Foam Molded:** Process that produces an extremely durable product that withstands heavy loads and high abuse.

**Modular Design:** Engineered to fit and stack precisely for maximum trailer cube utilization.

**Dynamic Load:** The weight capacity of the pallet during shipping.

**"Seat Belt" System:** Wraps around containers and locks into top cap to secure load.

## Straight Wall Design

Straight, smooth interior walls allow for maximum cube and easy insertion of dunnage

## Reinforced Corner Ribbing

Provides maximum column strength for secure stacking

## Large Identification Areas

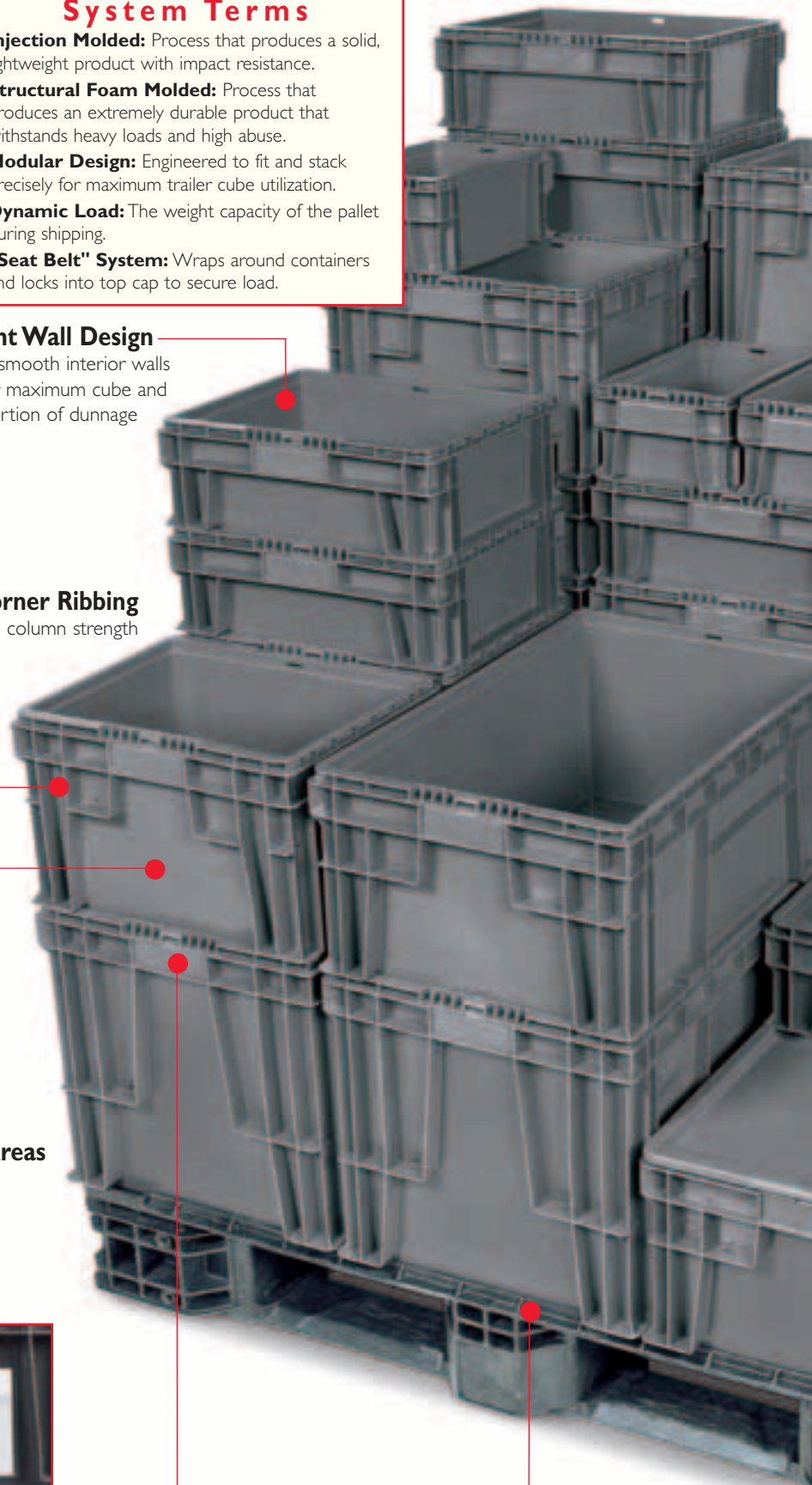
Located on all four sides

## Deep, Ergonomic Handles

For enhanced comfort, efficiency, and safety when lifting loaded containers

## Pallet Perimeter Lip

Provides load stability and prevents container slippage



# Profit *in Motion*

## The Bottom Line on the Straight Wall...

- Maximum internal/external cube utilization
  - Long-lasting performance and value
  - Reduced handling risks and increased efficiency
  - Exceptional stability—with versatility
- ... *The System That Contains Your Costs!*

# Straight Wall Container System Features

### Lids

Protect contents against dust, dirt and other contaminants. Some containers are available with attached lids



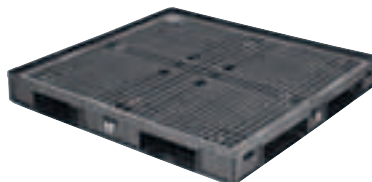
### Cross Cube Containers

Our SX Cross Cube containers have a special bottom-grid design that facilitates stacking of larger containers on smaller containers.

- Optimize pallet space with vertically modular loads
- Improve line space usage
- Sequence parts by usage
- Reinforced bottom for secure stacking



## Pallet Systems & Top Caps



### 4-way entry pallets feature:

- Dynamic weight capacity 3,000-8,000 lbs. (varies by pallet model)\*
- Perimeter lips available on each pallet
- 2 to 4 Pallet Lock "Seat Belt" Systems

\*Based on equally distributed load at room temperature of 73°F (+/- 5°)



### Top caps increase stability by:

- Securing top layer of palletized containers
- Accommodating optional pallet lock "seat belt" system to further secure stacks

### Custom Interior Dunnage

Ask about custom interior packaging to protect your product



### Space Saving Design

The modular design cubes the AIAG standard 48" x 45" pallet and 48" x 40" pallet for maximum space usage



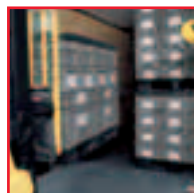
## Ideal for Applications in...



**Automotive**



**Appliance**



**Component Parts Shipping**



**Assembly/Parts Picking**

plus ...

- General Manufacturing
  - In-Process Handling
  - Pharmaceuticals
  - Small Parts
- ... and many more!

# Straight Wall Container System

## Straight Wall Container System

Our line of stack-only straight wall containers with matching pallets and top caps offer greater capacity and flexibility for parts shipping, in-process handling, and storage in manufacturing applications. Straight, solid walls provide optimal internal and external space efficiency.

- Modular design cubes 48" x 45" and 48" x 40" pallets
- Interworking sizes allow mixed stacking on pallets
- Compatible with automated handling systems
- SW prefix denotes standard bottom
- SX prefix denotes cross cube bottom
- SA prefix denotes attached lids
- 7 sizes available with perimeter dust skirts for additional product protection
- Lids snap tightly in place protecting contents from contaminants. Tie holes allow lids to be secured with ties
- Custom dunnage design guidance available; Call for details
- **OPTIONS:** Lids and ID systems.

**NEW!**

**Attached Lid**  
provides greater product protection

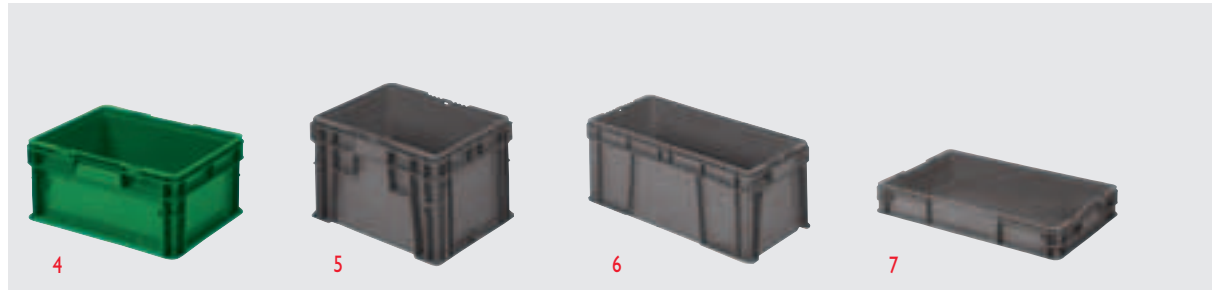


**[S]** Model No. SA15120802  
Dim: L 15" x W 12" x H 7.5"  
Color: Dk. Gray

**[S]** Model No. SA15121002 (1)  
Dim: L 15" x W 12" x H 9.5"  
Color: Dk. Gray

**[S]** Model No. SW12070502 (2)  
Dim: L 12" x W 7.5" x H 5"  
Color: Dk. Gray

**[S]** Model No. SW15120602 (3)  
Dim: L 15" x W 12" x H 5.5"  
Colors: Dk. Gray, Green, Dk. Blue



**[S]** Model No. SW151208A2 (4)  
**[S]** Model No. SX151208A4  
Dim: L 15" x W 12" x H 7.5"  
Colors: Dk. Gray, Green, Dk. Blue (SW151208A4 Stocked in Dk. Gray) w/Dust Skirt

**[S]** Model No. SW15121002 (5)  
Dim: L 15" x W 12" x H 9.5"  
Color: Dk. Gray

**[S]** Model No. SW24111002 (6)  
Dim: L 24" x W 11" x H 9.5"  
Color: Dk. Gray

**[S]** Model No. SW241504A2 (7)  
**[S]** Model No. SX241504A4  
Dim: L 24" x W 15" x H 4"  
Color: Dk. Gray w/Dust Skirt



**[S]** Model No. SW24150602 (8)  
Dim: L 24" x W 15" x H 5.5"  
Colors: Dk. Gray, Green, Dk. Blue

**[S]** Model No. SW241508A2 (9)  
**[S]** Model No. SX241508A4  
Dim: L 24" x W 15" x H 7.5"  
Colors: Dk. Gray, Green, Dk. Blue (SX241508A4 Stocked in Dk. Gray) w/Dust Skirt

**[S]** Model No. SW24151002 (10)  
**[S]** Model No. SX24151000  
Dim: L 24" x W 15" x H 9.5"  
Color: Dk. Gray

**[S]** Model No. SW241511A2 (11)  
**[S]** Model No. SX241511A4  
Dim: L 24" x W 15" x H 11"  
Color: Dk. Gray w/Dust Skirt

**[S]** Model No. SW24151502 (12)  
**[S]** Model No. SX24151500  
Dim: L 24" x W 15" x H 14.5"  
Color: Dk. Gray

Straight Wall Container System



**[S]** Model No. SW242208A2 (13)  
**[S]** Model No. SX242208A4  
Dim: L 24" x W 22" x H 7.5"  
Color: Dk. Gray w/Dust Skirt

**[S]** Model No. SW242211A2 (14)  
**[S]** Model No. SX242211A4  
Dim: L 24" x W 22" x H 11"  
Color: Dk. Gray w/Dust Skirt

**[S]** Model No. SW242215A2 (15)  
**[S]** Model No. SX242215A4  
Dim: L 24" x W 22" x H 14.5"  
Color: Dk. Gray w/Dust Skirt

**[S]** Model No. SW32150802  
Dim: L 32" x W 15" x H 7.5"  
Color: Dk. Gray

Model No. SW48150802 (16)  
Model No. SX48150800  
Dim: L 48" x W 15" x H 7.5"  
Color: Dk. Gray

**[S]** = In Stock Items

## Pallets

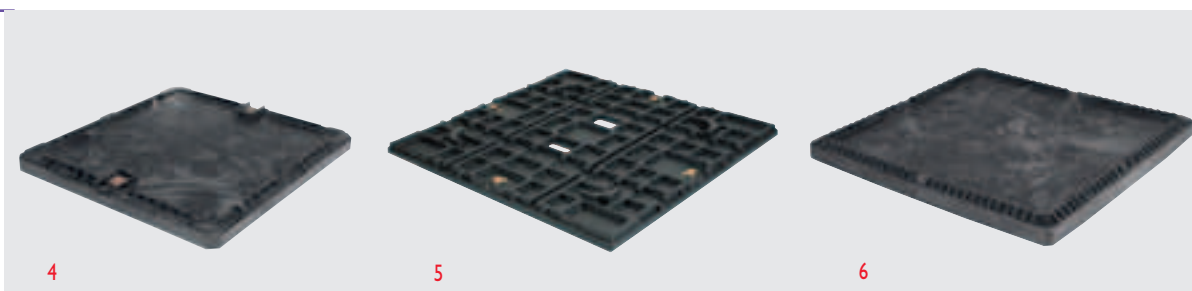
- Structural foam construction
- Closed or ventilated deck, depending on model, for easy cleaning
- 4-way fork entry
- Rackable for space savings
- Perimeter lip to prevent container slippage
- Optional seat belts wrap around the containers and lock into the top cap for more load stability, eliminating the need for banding or stretch wrap
- **OPTIONS:** ID tag locations



- S Model No. PM32300632 (1)**  
 Dim: L 32" x W 30" x H 6"  
 Capacity: 3,000 lbs. / 1,361 kg  
 Color: Black  
 \*to deck of pallet
- S Model No. PO48450632 (2)**  
 Dim: L 48.75" x W 45.75" x H 6"  
 Capacity: 3,000 lbs. / 1,350 kg (dynamic)  
 Color: Black  
 \*to deck of pallet
- S Model No. PR48450533 (3)**  
 Dim: L 48.50" x W 45.25" x H 5"  
 Capacity: 8,000 lbs. / 3,600 kg (dynamic)  
 Color: Black
- S Model No. PW48450622**  
 Dim: L 47.62" x W 44.75" x H 6.38"  
 Capacity: 7,000 lbs. / 3,150 kg (dynamic)  
 Color: Black

## Top Caps

- Top caps secure container loads for stacking, shipping, and storing in racks
- Optional seat belts wrap around the containers and lock into the top cap for more load stability, eliminating the need for banding or stretch wrap
- Pallets slide into grooves on the top cap surface for secure stacking
- Vacuum formed cap also available for **PO48450632** and **PR48450533**. See page 34 for specifications.
- **OPTIONS:** ID label areas



- S Model No. TM32300300 (4)**  
 Compatible with 32x30 pallet  
 Dim: L 33" x W 31" x H 2.5"  
 Color: Black
- S Model No. TV48450300 (5)**  
 Dim: L 49" x W 46" x H 2.75"  
 Construction: Vacuum Formed  
 Color: Black
- S Model No. TO48450300 (6)**  
 Compatible with PO pallet  
 Dim: L 48.75" x W 45.75" x H 2.75"  
 Color: Black

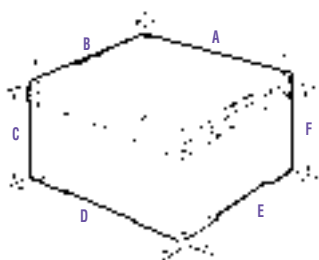


- S Model No. TW48450200 (7)**  
 Compatible with 48x45 PW pallets  
 Dim: L 48.24" x W 45.24" x H 2.25"  
 Color: Black

# Straight Wall Container System Specifications

## Straight Wall

- Stock color: Dark Gray  
Models **SW15120602**, **SW151208A2**, **SW24150602**, and **SW241508A2** also available in Green, Dk. Blue
- Other colors available, minimum order required



| Model No.                       | Description        | Dimensions |       |       |       |       |       | Weight lbs | Weight Capacity lbs | Volume Cu. Ft. | Trailer Capacity |        |
|---------------------------------|--------------------|------------|-------|-------|-------|-------|-------|------------|---------------------|----------------|------------------|--------|
|                                 |                    | L"(A)      | W"(B) | H"(C) | L"(D) | W"(E) | H"(F) |            |                     |                | 48'              | 53'    |
| <b>S</b> SW12070502             | Solid Bottom/Sides | 12         | 7.5   | 5     | 9.38  | 5.44  | 4.38  | 1.2        | 60                  | 0.13           | 10,368           | 11,232 |
|                                 | <b>mm/kg/m³/l</b>  | 305        | 191   | 127   | 238   | 138   | 111   | 0.5        | 27                  | 3.66           | —                | —      |
| <b>S</b> SW15120602             | Solid Bottom/Sides | 15         | 12    | 5.5   | 13    | 9.38  | 4.88  | 2.3        | 100                 | 0.34           | 4896             | 5304   |
|                                 |                    | 381        | 305   | 140   | 330   | 238   | 124   | 1.0        | 45                  | 9.75           | —                | —      |
| <b>S</b> SW151208A2             | Solid Bottom/Sides | 15         | 12    | 7.5   | 13    | 9.38  | 6.88  | 2.5        | 100                 | 0.49           | 3456             | 3744   |
|                                 |                    | 381        | 305   | 191   | 330   | 238   | 175   | 1.1        | 45                  | 13.75          | —                | —      |
| <b>S</b> SW15121002             | Solid Bottom/Sides | 15         | 12    | 9.5   | 13    | 9.38  | 8.88  | 3.5        | 100                 | 0.63           | 2592             | 2808   |
|                                 |                    | 381        | 305   | 241   | 330   | 238   | 226   | 1.6        | 45                  | 17.75          | —                | —      |
| <b>S</b> SW24111002             | Solid Bottom/Sides | 24         | 11    | 9.5   | 21.38 | 9.13  | 8.88  | 4.3        | 100                 | 1.00           | 2016             | 2160   |
|                                 |                    | 610        | 279   | 241   | 543   | 232   | 226   | 2.0        | 45                  | 28.41          | —                | —      |
| <b>S</b> SW241504A2             | Solid Bottom/Sides | 24         | 15    | 4     | 21.38 | 13    | 3.38  | 2.9        | 100                 | 0.54           | 3456             | 3744   |
|                                 |                    | 610        | 381   | 102   | 543   | 330   | 86    | 1.3        | 45                  | 15.40          | —                | —      |
| <b>S</b> SW24150602             | Solid Bottom/Sides | 24         | 15    | 5.5   | 21.38 | 13    | 4.88  | 3.7        | 100                 | 0.78           | 2448             | 2652   |
|                                 |                    | 610        | 381   | 140   | 543   | 330   | 124   | 1.7        | 45                  | 22.23          | —                | —      |
| <b>S</b> SW241508A2             | Solid Bottom/Sides | 24         | 15    | 7.5   | 21.38 | 13    | 6.88  | 4.1        | 100                 | 1.11           | 1728             | 1872   |
|                                 |                    | 610        | 381   | 191   | 543   | 330   | 175   | 1.9        | 45                  | 31.34          | —                | —      |
| <b>S</b> SW24151002             | Solid Bottom/Sides | 24         | 15    | 9.5   | 21.38 | 13    | 8.88  | 5.3        | 100                 | 1.43           | 1296             | 1404   |
|                                 |                    | 610        | 381   | 241   | 543   | 330   | 226   | 2.4        | 45                  | 40.45          | —                | —      |
| <b>S</b> SW241511A2             | Solid Bottom/Sides | 24         | 15    | 11    | 21.38 | 13    | 10.38 | 5.4        | 100                 | 1.67           | 1152             | 1248   |
|                                 |                    | 610        | 381   | 279   | 543   | 330   | 264   | 2.5        | 45                  | 47.28          | —                | —      |
| <b>S</b> SW24151502             | Solid Bottom/Sides | 24         | 15    | 14.5  | 21.38 | 13    | 13.88 | 6.9        | 100                 | 2.23           | 864              | 936    |
|                                 |                    | 610        | 381   | 368   | 543   | 330   | 353   | 3.1        | 45                  | 63.23          | —                | —      |
| <b>New!</b> <b>S</b> SW242208A2 | Solid Bottom/Sides | 24         | 22    | 7.5   | 21.38 | 20.38 | 6.88  | 5.8        | 100                 | 1.73           | 1152             | 1248   |
|                                 |                    | 610        | 559   | 191   | 543   | 518   | 175   | 2.6        | 45                  | 49.13          | —                | —      |
| <b>New!</b> <b>S</b> SW242211A2 | Solid Bottom/Sides | 24         | 22    | 11    | 21.38 | 20.38 | 10.38 | 7.6        | 100                 | 2.62           | 768              | 832    |
|                                 |                    | 610        | 559   | 279   | 543   | 518   | 264   | 3.4        | 45                  | 74.12          | —                | —      |
| <b>New!</b> <b>S</b> SW242215A2 | Solid Bottom/Sides | 24         | 22    | 14.5  | 21.38 | 20.38 | 13.88 | 8.7        | 100                 | 3.50           | 576              | 624    |
|                                 |                    | 610        | 559   | 368   | 543   | 518   | 353   | 3.9        | 45                  | 99.12          | —                | —      |
| <b>S</b> SW32150802             | Solid Bottom/Sides | 32         | 15    | 7.5   | 29.38 | 13    | 6.88  | 5.6        | 100                 | 1.52           | 1152             | 1248   |
|                                 |                    | 813        | 381   | 191   | 746   | 330   | 175   | 2.5        | 45                  | 43.07          | —                | —      |
| <b>S</b> SW48150802             | Solid Bottom/Sides | 48         | 15    | 7.5   | 45.38 | 13    | 6.88  | 7.5        | 100                 | 2.35           | 864              | 936    |
|                                 |                    | 1219       | 381   | 191   | 1153  | 330   | 175   | 3.4        | 45                  | 66.52          | —                | —      |

Capacity is dependent upon application and use environment. Check with Buckhorn for suitability in your application. Specifications subject to change without notice.

