

SNYDER



Equipment, Inc.

Storing, Rolling, Lifting since 1947

PRODUCT INFORMATION

BLUFF YARD RAMPS

2946 Larimer St. Denver, CO 80205
303-295-1100 / 800-373-7693
FAX 303-295-2464
Email info@snyderequipment.com
www.snyderequipment.com



STEEL YARDRAMP

- All steel welded construction
- Capacities from 16,000 to 60,000 pounds
- Wide range of capacities and sizes available
- Solid rubber tires standard, pneumatic tires optional
- Steel serrated grating
- Double-action hydraulic pump

The Yardramp is simply moved into position at trailers, railcars, or docks. The operator utilizes a self-contained, double-acting hydraulic pump to adjust the unit to the proper position. In minutes you are ready to load or unload freight. Solid 18" rubber tires provide easy positioning and towing. Open serrated steel grating provides excellent traction

while preventing build-up of snow, water, and other debris. Beveled approach provides a smooth transition. For truck or railcar to ground applications choose a 36' unit including a level off. Choose a 30' straight design for quick loading from dock to ground.



HYDRAULIC PUMP

- **Double-acting**
- **Two hydraulic cylinders**

The hydraulic system allows for smooth and quick raising of the front lip to the proper dock or trailer height. Simply open the release valve to safely lower the unit into position. The pump is mounted internally to protect it from accidental damage.



UNDERCARRIAGE ASSEMBLY

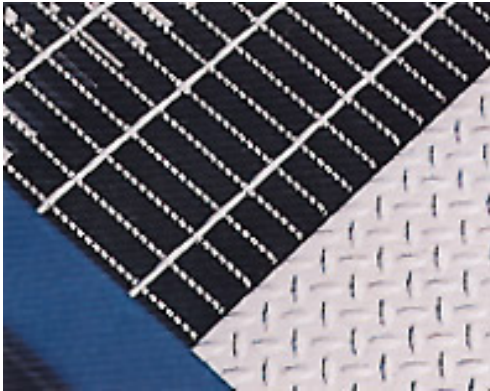
- **Tubular steel box undercarriage assembly**
- **18" solid rubber pneumatic profile tires**

Heavy-duty wheels and solid rubber, pneumatic profile tires make positioning the Yardramp easy. For stationary dock installations, standard Yardramps are available in 30' and 36' lengths without wheel assemblies.



RAMPCLAMP

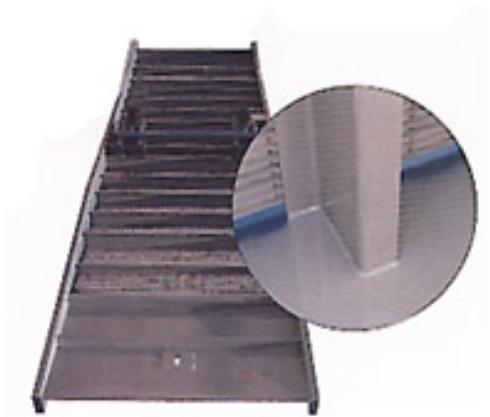
The optional rampclamp assists operator in moving the Yardramp over short distances. Forklift tine inserts into the swiveling lift loop and is secured by a locking device.



GRATING

- **Serrated for Traction**
- **Self-Cleaning**

Serrated grating provides excellent traction and the open design prevents buildup of water, snow, oil, grease and miscellaneous debris. The lower end approach plate provides maximum support and smooth transition onto the ramp grating surface.



GIRDERS

- **Heavy-duty formed steel side girders provide main load-bearing capability**
- **Steel side girders welded to steel Z members form a superior frame**

Multiple Z cross members are welded to the side girders, then self-cleaning steel grating is welded to the Z members to form a one-piece unitized Yardramp.



SAFETY CHAIN

Standard safety chains hold Yardramp securely to the trailer or dock.



TOW BAR

The optional towbar features a fast-locking, easy hook-up to the Yardramp and makes towing over long distances practical. A quick disconnect feature improves handling efficiency.

YARDRAMP SELECTION GUIDELINES

Capacity

The capacity you select must be greater than the combined weight of your heaviest forklift and the heaviest weight of anticipated loads it will carry.

Usable Width

Yardramp is available in 70" and 84" widths, with the 84" model accommodating more applications. The width should be at least 15" wider than the widest equipment to be used on the ramp. For railcar use, select the ramp width wide enough to prevent the forklift from hitting the ramp curbs as it turns into the railcar. Consult your forklift manual for radius turning capabilities. Measure railcar door openings to make sure the yardramp will fit.

Type and Length

Straight - 30' Length

This type is used primarily for ground to dock applications, where no Level off is required.

Level off - 36' Length

A six-foot Level off at the end of the ramp adds maneuverability for forklifts. This allows forklifts easier turning access into railcars and allows them to handle pallets next to the door openings. The 36' ramp is most popular where end-loading is required. Level off type is noted by the letter "L" following the model number.

YARDRAMP SPECIFICATIONS

Capacity	Length	Width	Bluff Model Number	Weight
16,000 lbs.	30'	70"	16 SYS 7030	4159 lbs.
	30'	84"	16 SYS 8430	4964 lbs.
	36'	70"	16 SYS 7036L	5102 lbs.
	36'	84"	16 SYS 8436L	5868 lbs.
20,000 lbs.	30'	70"	20 SYS 7030	4384 lbs.
	30'	84"	20 SYS 8430	5189 lbs.
	36'	70"	20 SYS 7036L	5327 lbs.
	36'	84"	20 SYS 8436L	6048 lbs.
25,000 lbs.	30'	70"	25 SYS 7030	4780 lbs.
	30'	84"	25 SYS 8430	5605 lbs.
	36'	70"	25 SYS 7036L	5762 lbs.
	36'	84"	25 SYS 8436L	6544 lbs.
30,000 lbs.	30'	70"	30 SYS 7030	5030 lbs.
	30'	84"	30 SYS 8430	5905 lbs.
	36'	70"	30 SYS 7036L	6020 lbs.
	36'	84"	30 SYS 8436L	6844 lbs.

Ramp Type	30' Straight	36' L W/6' Level-Off
Wheel Diameter	18"	18"
Raised Lip Height	78"	69"
Lowered Lip Height	37"	35"
% of Grade at 50" Height	14%	14%
Curb Heights	8"	8"
Carrier End treadplate	30" Reinforced Apron with 15" Lip	30" Reinforced Apron with 15" Lip
Approach Apron	60" Reinforced Apron	60" Reinforced Apron

Portable Dock



Place a Bluff Portable Dock in front of any dock or railcar door and you will be able to serve three loading/unloading positions at the same time. Portable Dock affords 90 degree turnability for safe forklift maneuvering. Portable Dock is a fast, economical way to expand your dock area and increase freight handling capabilities without the expense of site or concrete work. Portable Dock can easily be relocated to other areas of your yard where a free-standing loading dock may be needed. This means more trucks or railcars can be serviced while freeing up other critical dock doors. Optional adjustable, telescoping legs of 44" and 55" allow elevations to meet most dock height requirements. For remote areas, Portable Dock along with a Bluff Yardramp can serve as a satellite unloading area.

Options and Accessories

- RAMPCLAMP for short towing positioning.
- TOWBAR for longer towing distances.
- YARDRAMP without undercarriage.
- CHAIN BRACKET available in pairs.