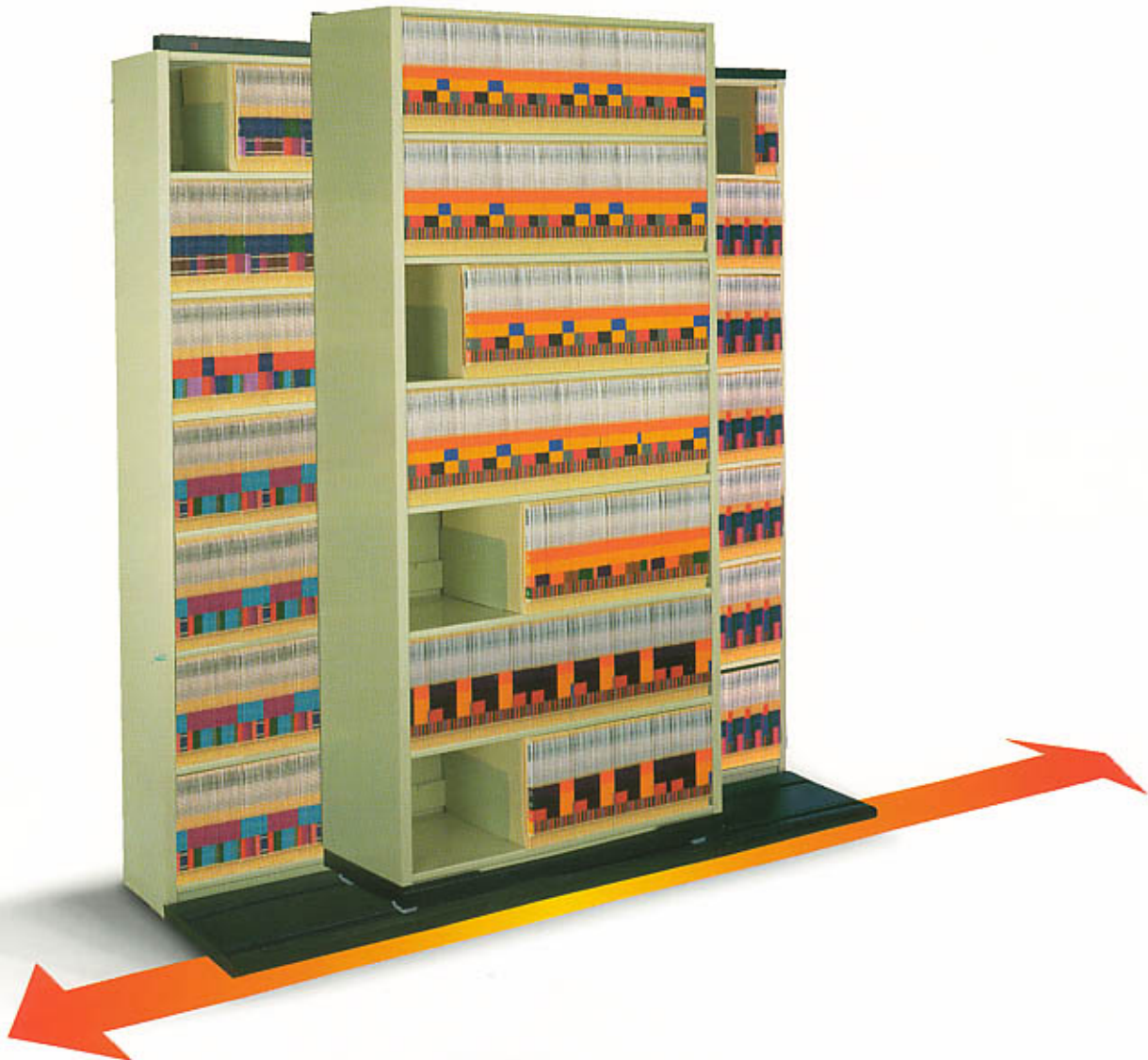




PRODUCT INFORMATION

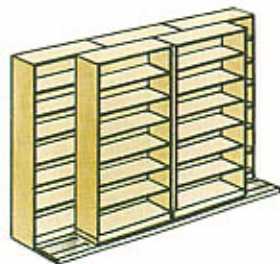
AURORA SIDE-TO-SIDE MOVABLE SYSTEM

2946 Larimer St. Denver, CO 80205
303-295-1100 / 800-373-7693
FAX 303-295-2464
Email info@snyderequipment.com
www.snyderequipment.com

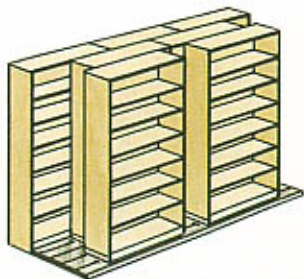


Side-To-Side Puts Two or Three Rows Of Storage At Your Fingertips

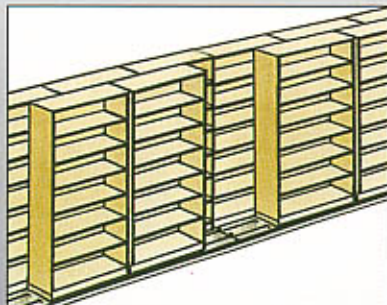
Conventional file cabinets simply can't match the flexibility and storage capacity of Side-To-Side. 7-tier or 8-tier Side-To-Side storage will handle twice the capacity of conventional file cabinets, accept letter or legal size documents and even provide storage for precision instruments, supplies and other materials. Hospitals, dental offices, clinics and financial institutions find Side-To-Side the ideal solution for highly active records and documents.



Side-To-Side is shown with two rows of shelving, three in the back and two in the front. Aurora four-post shelving is available in 36", 42" and 48" widths. Aurora Quik-Stak is available in 36" width only.



As storage needs increase, a two row system can easily be converted to a three row system (three in the back, two in the middle and two in the front).



Side-To-Side grows as you grow. For even greater storage capacity, Side-To-Side can be extended lengthwise.



Letter, Legal and More

Side-To-Side can be adapted to handle all letter and legal documents, office supplies, books, binders, equipment or virtually anything that must be accessed quickly.



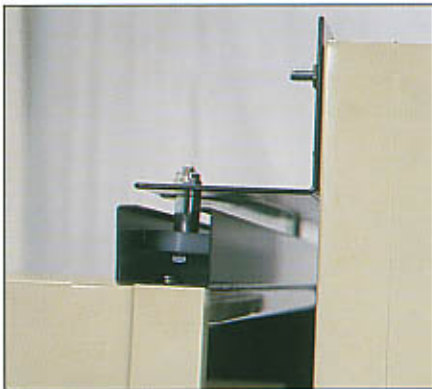
Move It - Stop It

There are four wheels per carriage, each 2 3/16" in diameter.



Super Simple Operation

Side-To-Side is one of the easiest gliding systems to operate. Just a firm push on a fully loaded unit and it glides smoothly and safely to the desired position.



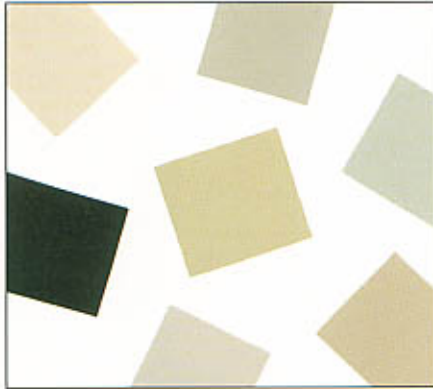
Safe and Secure

The stationary shelving unit and the gliding shelving units are linked securely together to prevent shifting or tipping. Channels formed of 18 gauge steel are attached to the stationary unit and 14 gauge steel brackets with 1 3/8" nylon faced ball bearing rollers are attached to the top of each gliding unit. These two systems lock together to form a strong and secure storage system.



A Sound Foundation

The deck and rail assembly of the Side-To-Side system provide a safe, heavy duty foundation that can be adjusted for carpeted, wood, concrete or tiled floors. The decking is formed of 16 gauge steel and coated with a non-skid, textured finish. Rail assemblies are formed of 13 gauge steel and are welded to a minimum of four corresponding 13 gauge steel support channels.



The Finish

All Side-To-Side units are painted with exclusive Glosstek™ textured paint finish. Choose from a variety of standard finishes or custom paint finishes. The rail assemblies, deck and carriage are coated with a non-skid, textured black finish.